

17. Failure Code

Indoor unit failure code

Indication on wired controller	Flash times of LED on indoor PCB/ timer LED on remote receiver	Failure code definition	Remark
1	1	Indoor ambient temp. sensor TA failure	Resumable
2	2	Indoor coil pipe temp. sensor TC1 failure	
3	3	Indoor coil pipe temp. sensor TC2 failure	
4	4	Dual heat source sensor TW failure	
5	5	Indoor EEPROM failure	Unresumable
6	6	Communication between indoor and outdoor failure	Resumable
7	7	Communication between indoor and wired controller failure	Resumable
8	8	Indoor float switch failure	Resumable
9	9	Indoor address repeated failure	Resumable
0C	12	No 50Hz zero passage signal	Resumable
12	18	The 4-way valve of 3-pipe valve box reversing failure	Unresumable
Outdoor failure code	20	Outdoor failure code	Resumable

Round -Way Cassette (40VU***R-7E-QEE) failure code

Failure code on wired controller (hex)	PCB LED5 (Indoor units) / receiver timer lamp (remote controller)	Panel display	Fault Descriptions
01	1	01	Indoor ambient temp. sensor TA failure
02	2	02	Indoor coil pipe temp. sensor TC1 failure
03	3	03	Indoor coil pipe temp. sensor TC2 failure
04	4	04	Dual heat source sensor TW failure
05	5	05	Indoor EEPROM failure
06	6	06	Communication between indoor and outdoor failure
07	7	07	Communication between indoor and wired controller failure
08	8	08	Indoor float switch failure
09	9	09	Indoor address repeated failure
0A	10	10	Communication between indoor and display board failure
0C	12	12	Indoor unit 50Hz Zero-crossing failure
0E	14	14	DC motor failure
12	18	18	The 4-way valve of 3-pipe valve box reversing failure
14	20	20	Outdoor failure code

Slim duct - DC (40VU***R-7E-QEE) failure code

Failure code on wired controller (hex)	PCB LED5(Indoor Units)/ Receiver Timer Lamp(Remote Controller)	Fault Descriptions
01	1	Indoor ambient temp. sensor TA failure
02	2	Indoor coil pipe temp. sensor TC1 failure
03	3	Indoor coil pipe temp. sensor TC2 failure
04	4	Dual heat source sensor TW failure
05	5	Indoor EEPROM failure
06	6	Communication between indoor and outdoor failure
07	7	Communication between indoor and wired controller failure
08	8	Indoor float switch failure
09	9	Indoor address repeated failure
0C	12	Indoor unit 50Hz Zero-crossing failure
0E	14	DC motor failure
12	18	The 4-way valve of 3-pipe valve box reversing failure
14	20	Outdoor failure code

FLEX CEILING FLOOR -DC (40VC***F-7S-QEE) failure code

Failure code at wired controller (hex)	PCB LED5 (Indoor Units) / Receiver Timer Lamp (Remote Controller)	Fault Descriptions
1	1	Fault of indoor unit ambient temp. transducer TA
2	2	Fault of indoor unit pipe temp. transducer TC1
3	3	Fault of indoor unit pipe temp. transducer TC2
5	5	Fault of indoor unit EEPROM
6	6	Fault of communication between indoor & outdoor units
7	7	Fault of communication between indoor unit and wired control
8	8	Fault of indoor unit water drainage
9	9	Fault of duplicate indoor unit address
14	14	Fault of DC MOTOR
18	18	Fault of BS valve box or 4MV Reverse
20	20	Fault of DC fan

Note:

The error code 18 displays when the convertible unit connected with XCT7. when it displays, it means you should check the valve box, check the 4-way valve in valve box

High wall (40VK005~030S-7S-QEE) failure code

Failure code on wired controller (hex)	Indoor panel display failure code	Indoor PCB LED5 flashes times	Fault Descriptions
01	E01	1	Indoor ambient temp. sensor TA failure
02	E02	2	Indoor gas pipe temp. sensor TC1 failure
03	E03	3	Indoor liquid pipe temp. sensor TC2 failure
04	E04	4	Dual heat source sensor TW failure
05	E05	5	Indoor EEPROM failure
06	E06	6	Communication between indoor and outdoor failure
07	E07	7	Communication between indoor and wired controller failure
08	E08	8	Indoor float switch failure
09	E09	9	Indoor address repeated failure
0C	E12	12	Indoor unit 50Hz Zero-crossing failure
0E	E14	14	DC motor failure
12	E18	18	The 4-way valve of 3-pipe valve box reversing failure
14	E20	20	Outdoor failure code

Compact 4 -Way Cassette (40VU005~012C-7S-QEE) failure code

Failure code on wired controller (hex)	PCB LED5(Indoor Units)/ Receiver Timer Lamp(Remote Controller)	Panel display (yellow light flash times)	Fault Descriptions
01	1	1	Fault of indoor unit ambient temp. transducer TA
02	2	2	Fault of indoor unit pipe temp. transducer TC1
03	3	3	Fault of indoor unit pipe temp. transducer TC2
04	4	4	Fault of indoor unit dual heat source temp. transducer
05	5	5	Fault of indoor unit EEPROM
06	6	6	Fault of communication between indoor & outdoor units
07	7	7	Fault of communication between indoor unit and wired control
08	8	8	Fault of indoor unit water drainage
09	9	9	Fault of duplicate indoor unit address
0C	12	12	Fault of zero cross sing
0E	14	14	Fault of DC fan
12	18	18	The 4-way valve of 3-pipe valve box reversing failure
14	20	20	Corresponding faults of outdoor units

One-way cassette (40VU***-7E-QEE) failure code

Failure code on wired controller (hex)	PCB LED5(Indoor Units)/ Receiver Timer Lamp(Remote Controller)	Panel display	Fault Descriptions
01	1	01	Fault of indoor unit ambient temp. transducer TA
02	2	02	Fault of indoor unit pipe temp. transducer TC1
03	3	03	Fault of indoor unit pipe temp. transducer TC2
04	4	04	Fault of indoor unit dual heat source temp. transducer
05	5	05	Fault of indoor unit EEPROM
06	6	06	Fault of communication between indoor & outdoor units
07	7	07	Fault of communication between indoor unit and wired control
08	8	08	Fault of indoor unit water drainage
09	9	09	Fault of duplicate indoor unit address
0C	12	12	Indoor unit 50Hz Zero-crossing failure
0E	14	14	Fault of DC fan
12	18	18	The 4-way valve of 3-pipe valve box reversing failure
14	20	20	Outdoor failure code

Two-way Console(40VL***B-7E-QEE) failure code

Failure code on wired controller (hex)	PCB LED5(Indoor Units)/ Receiver Timer Lamp(Remote Controller)	Fault Descriptions
01	1	Indoor ambient temp. sensor TA failure
02	2	Indoor coil pipe temp. sensor TC1 failure
03	3	Indoor coil pipe temp. sensor TC2 failure
05	5	Indoor EEPROM failure
06	6	Communication between indoor and outdoor failure
07	7	Communication between indoor and wired controller failure
08	8	Indoor float switch failure
09	9	Indoor address repeated failure
0C	12	Indoor unit 50Hz Zero-crossing failure
0E	14	DC motor failure
12	18	The 4-way valve of 3-pipe valve box reversing failure
14	20	Outdoor failure code

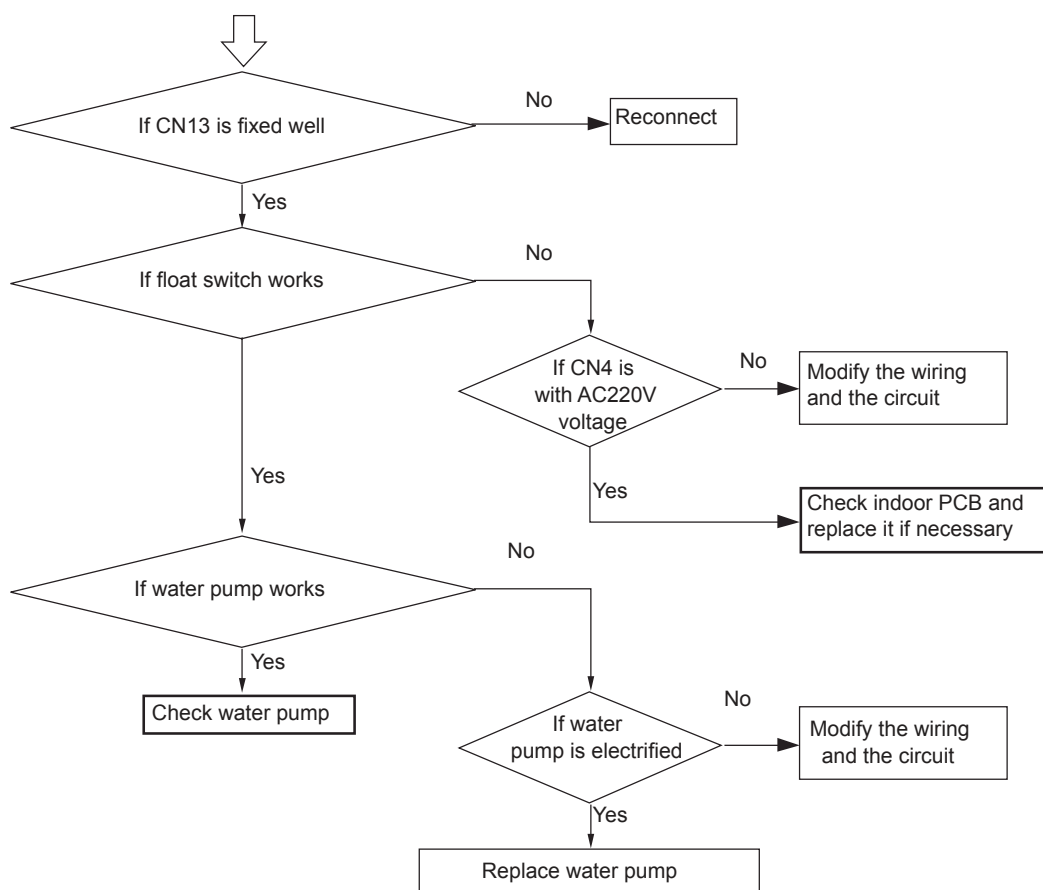
DC MED ESP DUCT (40VD***S-7S-QEE) ailure code

Failure code at wired controller (hex)	PCB LED5 (Indoor Units) / Receiver Timer Lamp (Remote Controller)	Fault Descriptions
01	1	Fault of indoor unit ambient temp. transducer TA
02	2	Fault of indoor unit pipe temp. transducer TC1
03	3	Fault of indoor unit pipe temp. transducer TC2
04	5	Fault of indoor unit EEPROM
05	6	Fault of communication between indoor & outdoor units
06	7	Fault of communication between indoor unit and wired control
07	8	Fault of indoor unit water drainage
08	9	Fault of duplicate indoor unit address
09	14	Fault of DC MOTOR
0A	18	Fault of BS valve box or 4MV Reverse
20	20	Outdoor

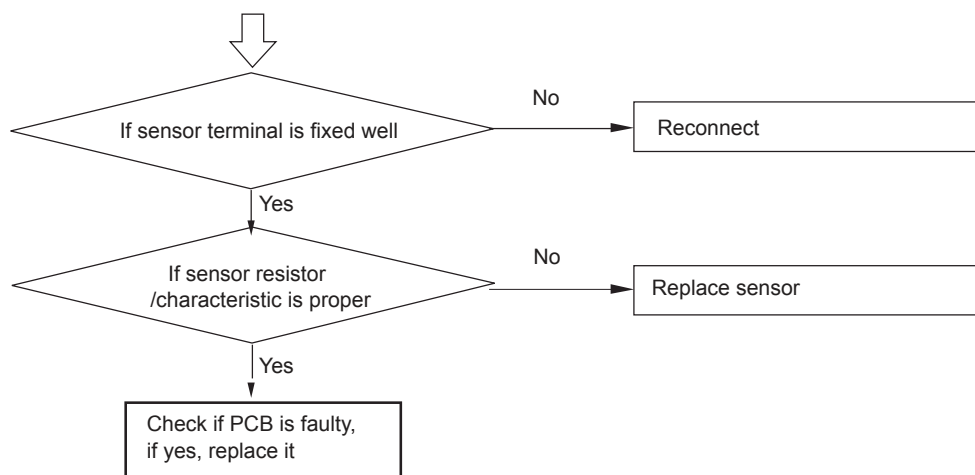
18. Troubleshooting

Indoor failure diagnose

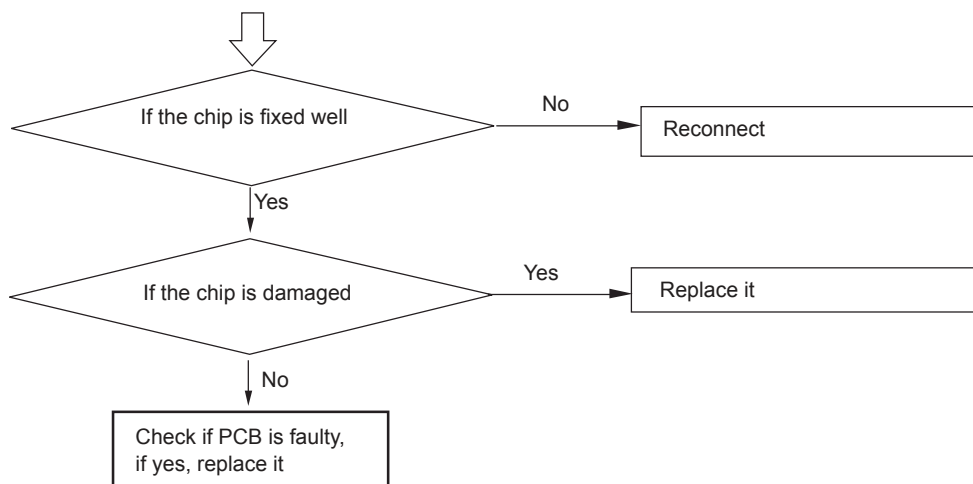
[08] Indoor drainage system failure/float switch circuit on indoor PCB failure



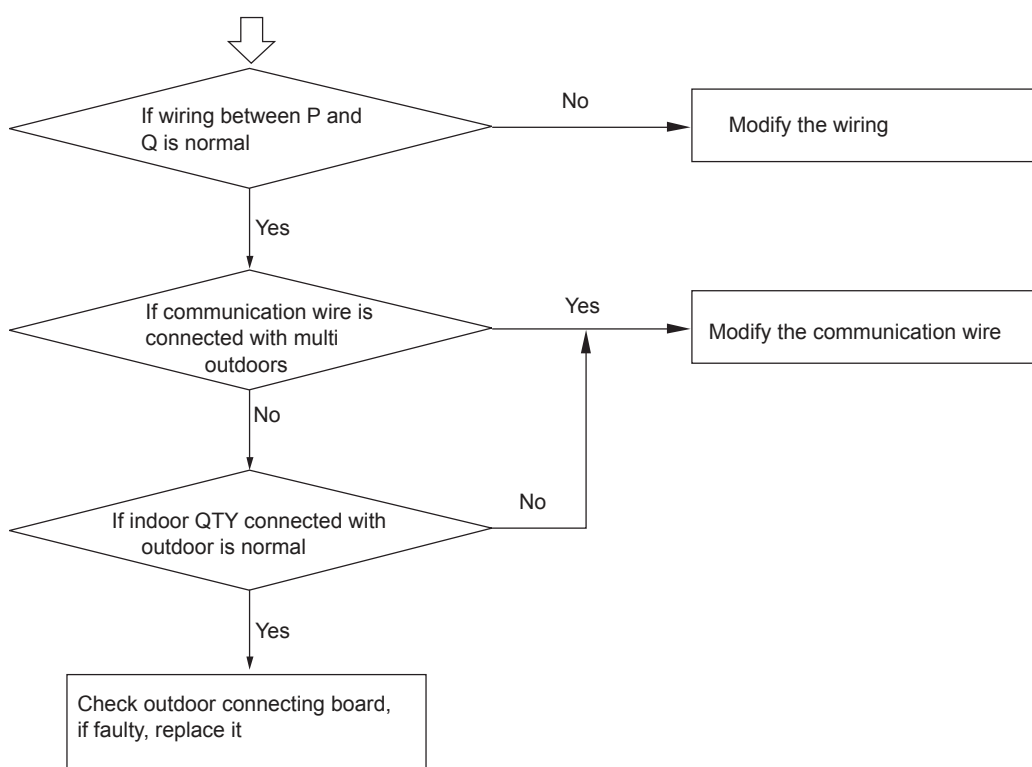
[1/2/3/4/15] Indoor sensor failure



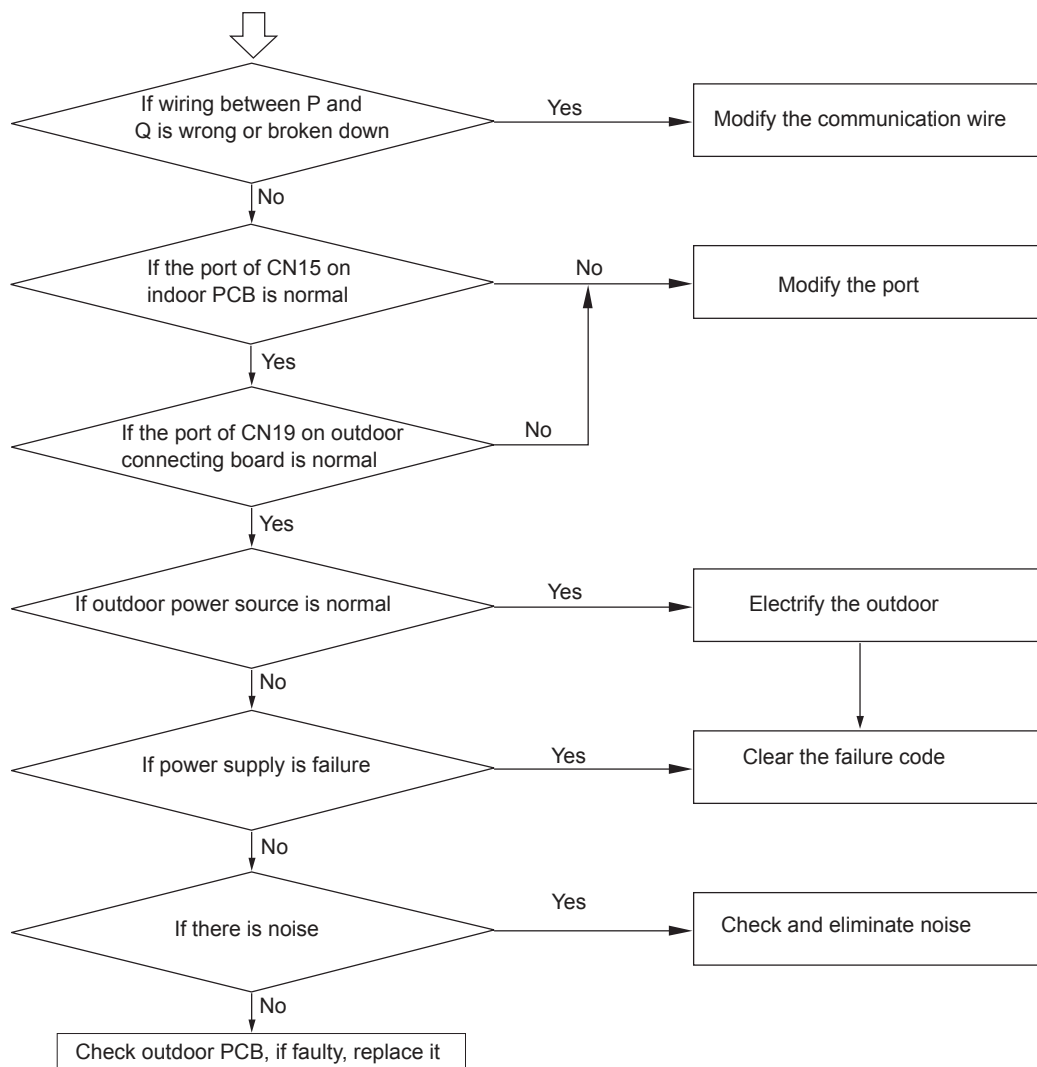
[05] EEPROM failure



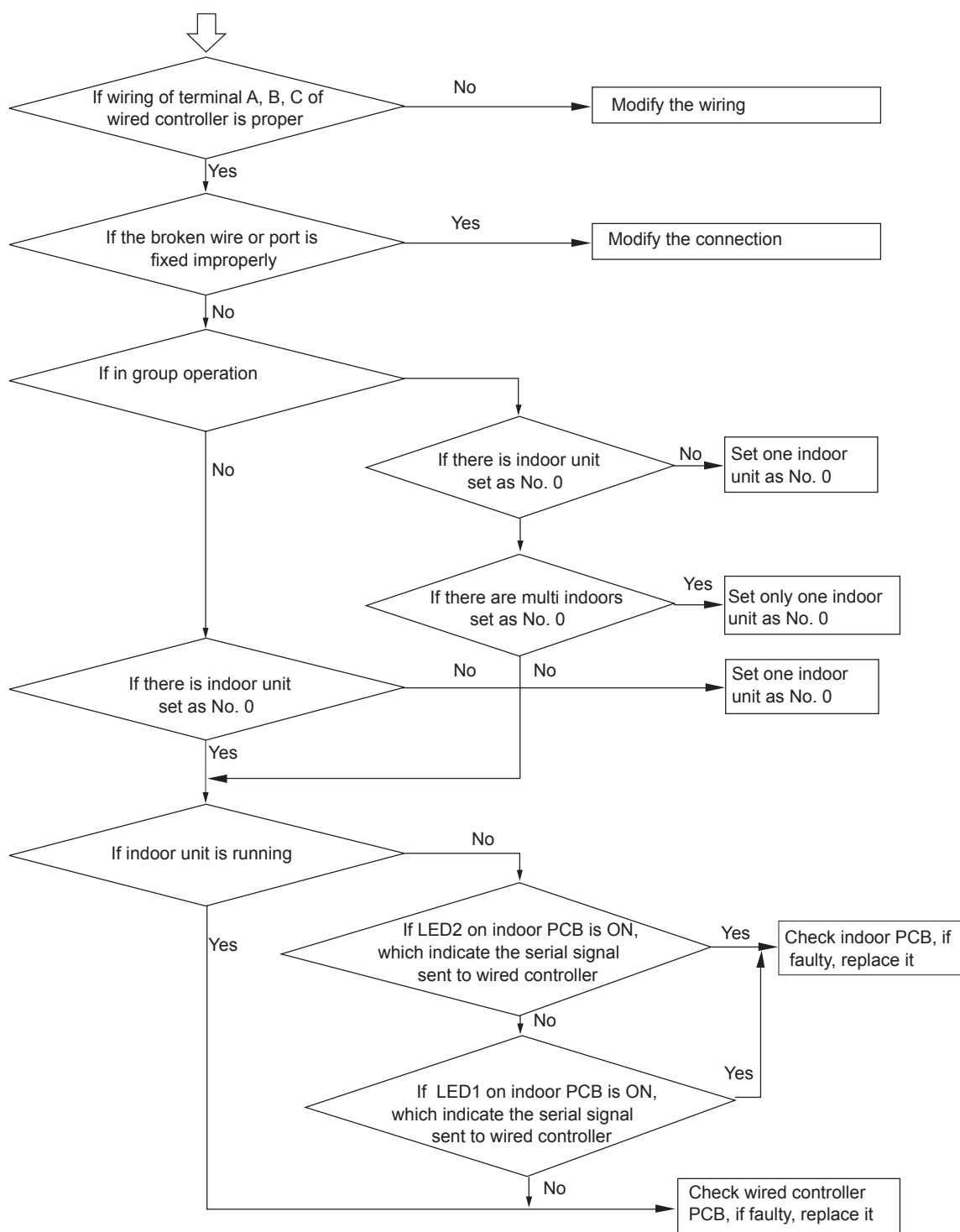
[09] Indoor address repeated



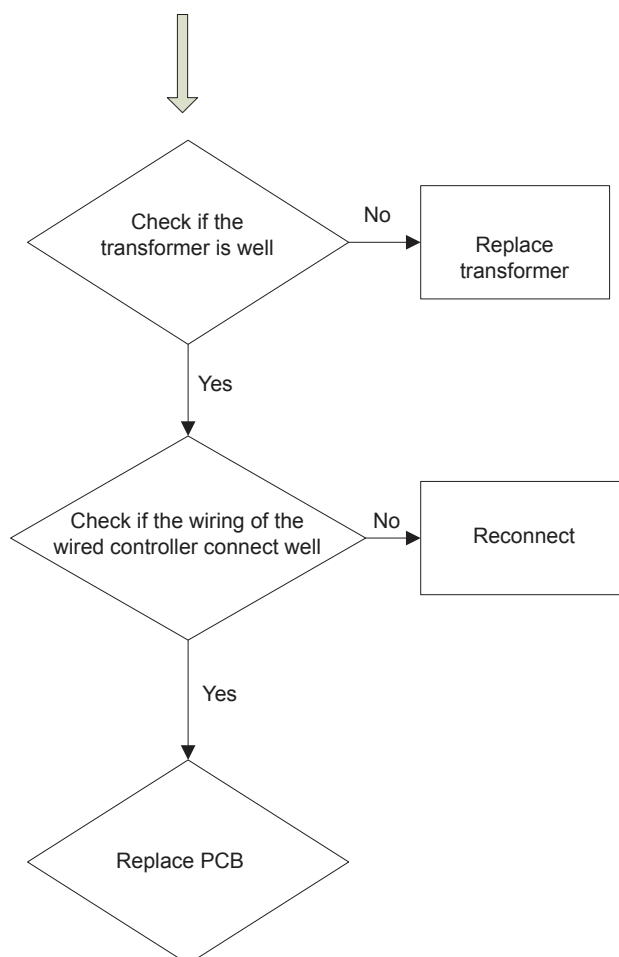
[06] Communication circuit between indoor and outdoor



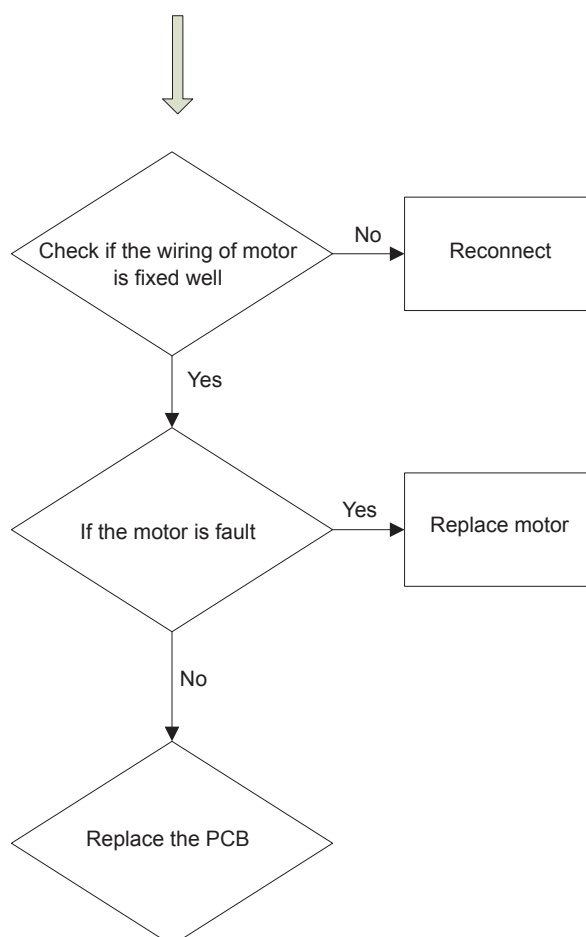
[07] Communication abnormal between indoor and wired controller



[12] No 50Hz zero passage signal



[14] DC motor failure



[18] The 4-way valve of 3-pipe valve box reversing failure

